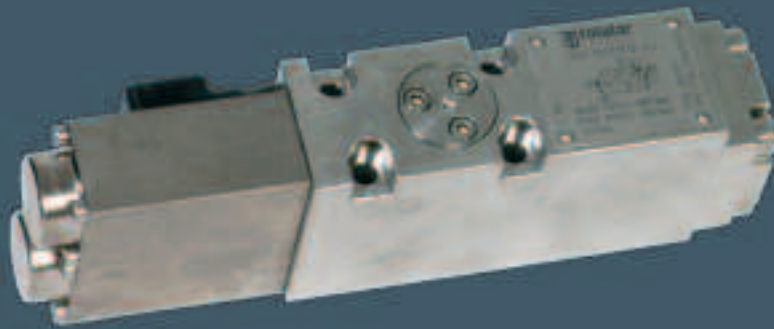


HYDRAULIC DIRECTIONAL CONTROL VALVE

DATASHEET

SERIES 15

HCV 151.11.11.12-3.2 (STANDARD)



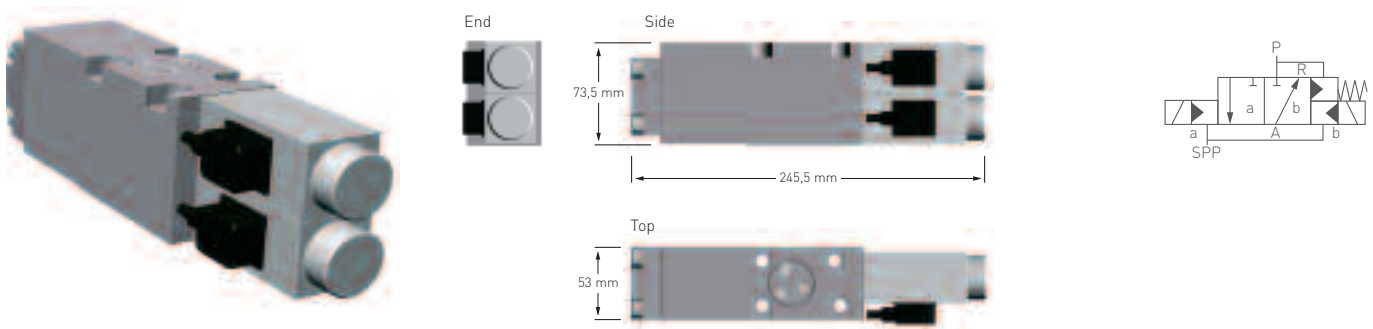
Hydraulic Directional Control Valve

- High quality
- Excellent performance
- Reliability
- Highly comprehensive qualification test programmes
- Applicable in all subsea production control systems worldwide
- Endures extreme high pressure

Basic Technical Specification

General	
Type	HCV 151.11.11.12-3.2 (Standard)
Operation	Pulse activated Solenoid/Hydraulic operation to Closed/Open Position. Valve will latch to closed position when supply pressure falls below a specified level.
Port	3
Position	2
Mounting	Subplate
Weigth	5.3 kg (11.7 lb)
Materials	
Body	AiSi 316
Slide	TuNi
Seat	TuNi
Pilot Parts	Fully seawater corrosion resistant materials
Pressures	
Proof Pressure Supply/Pilot/Return	1420 Bar / 570 Bar / 570 Bar (20.600 psi / 8.250 psi / 8.250 psi)
Supply Pressure	90 - 862 Bar (1.300 - 12.500 psi)
Pilot Pressure	90 - 345 Bar (1.300 - 5.000 psi)
Maximum Return Pressure	345 bar (5.000 psi)
External Pressure	400 Bar (5.800 psi)
Reset Supply Pressure	50 ± 5 bar (725 psi ± 72 psi)
Capacity	
Cv, P - A	0.23
Cv, A - R	0.20
Steady State Leakage	Less than 0.2 ml/min
Cleanliness requirements	SAE AS 4059D, class 12, class 8
Electric Data	
Nom. Voltage	24 V
Nom. Power	12.5 W
Operations	
No. of operations @ 345/ 345 bar (5.000/ 5.000 psi) supply pressure	50.000*
No. of operations @ 862/ 345 bar (12.500 psi/ 5.000 psi) supply pressure	25.000*
Operating Temperature	-10°C / + 50°C (14°F / 122°F)
Fluid	
General	Water glycol and mineral oil based subsea fluids

*The lubricity of different fluids varies, and will influence the No. of operations. Please contact Oceaneering Rotator



HYDRAULIC DIRECTIONAL CONTROL VALVE

DATASHEET

SERIES 15

HCV 151.11.11.12-3.2 (HIGH PRESSURE)



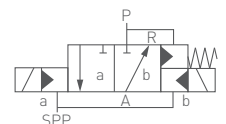
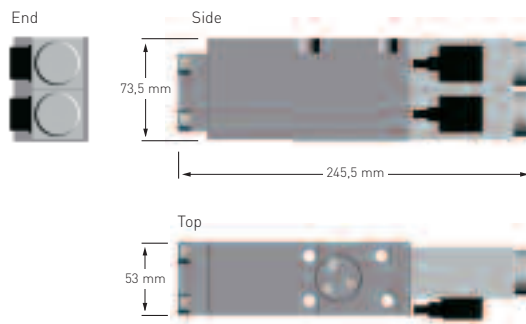
Hydraulic Directional Control Valve

- High quality
- Excellent performance
- Reliability
- Highly comprehensive qualification test programmes
- Applicable in all subsea production control systems worldwide
- Endures extreme high pressure

Basic Technical Specification

General	
Type	HCV 151.11.11.12-3.2 (High pressure)
Operation	Pulse activated Solenoid/Hydraulic operation to Closed/Open Position. Valve will latch to closed position when supply pressure falls below a specified level.
Port	3
Position	2
Mounting	Subplate
Weigth	5.3 kg (11.7 lb)
Materials	
Body	AiSi 316
Slide	TuNi
Seat	TuNi
Pilot Parts	Fully seawater corrosion resistant materials
Pressures	
Proof Pressure Supply/Pilot/Return	1900 Bar / 570 Bar / 570 Bar (27.500 psi / 8.250 psi / 8.250 psi)
Supply Pressure	110 - 1380 Bar (1.600 - 20.000 psi)
Pilot Pressure	110 - 345 Bar (1.600 - 5.000 psi)
Maximum Return Pressure	345 bar (5.000 psi)
External Pressure	400 Bar (5.800 psi)
Reset Supply Pressure	50 ± 5 bar (725 psi ± 72 psi)
Capacity	
Cv, P - A	0.23
Cv, A - R	0.20
Steady State Leakage	Less than 0.2 ml/min
Cleanliness requirements	SAE AS 4059D, class 12, class 8
Electric Data	
Nom. Voltage	24 V
Nom. Power	12.5 W
Operations	
No. of operations @ 1380/ 345 bar (20.000/ 5.000 psi) supply pressure	25.000*
Operating Temperature	-10°C/ + 50°C (14°F / 122°F)
Fluid	
General	Water glycol and mineral oil based subsea fluids

*The lubricity of different fluids varies, and will influence the No. of operations. Please contact Oceaneering Rotator

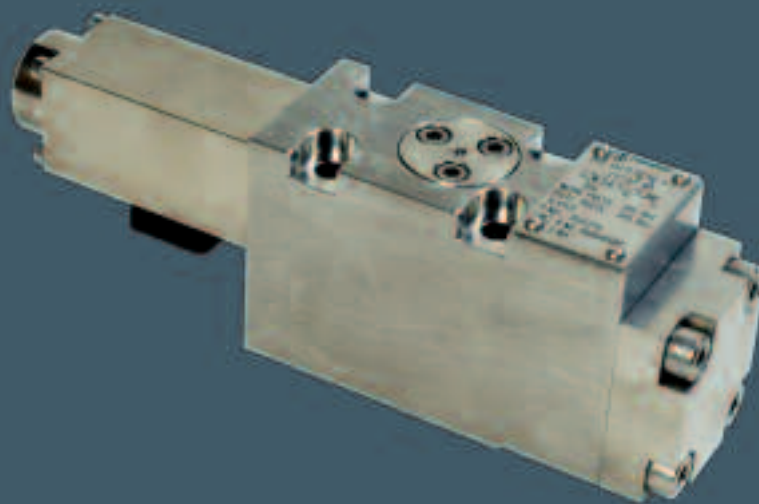


HYDRAULIC DIRECTIONAL CONTROL VALVE

DATASHEET

SERIES 15

HCV 151.11.50.00-3.2



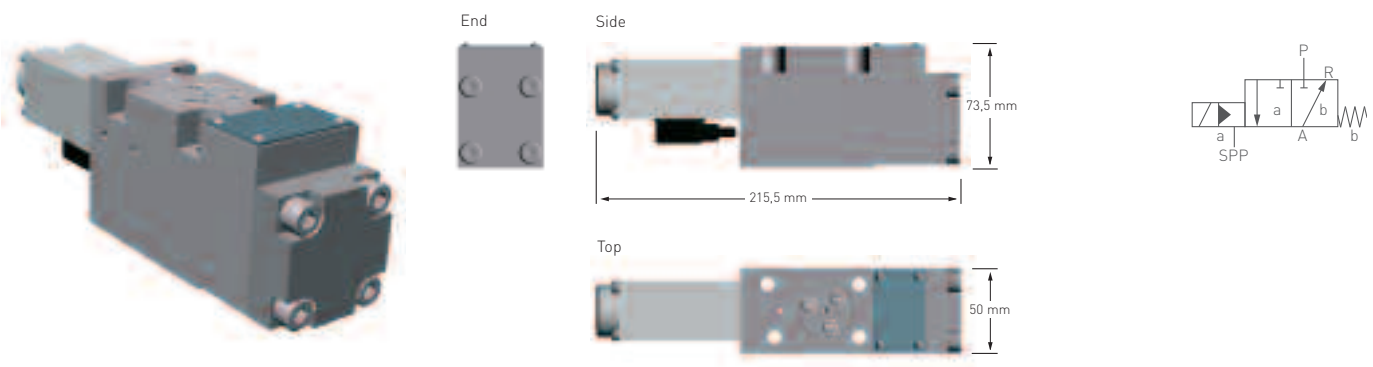
Hydraulic Directional Control Valve

- High quality
- Excellent performance
- Reliability
- Highly comprehensive qualification test programmes
- Applicable in all subsea production control systems worldwide
- Endures extreme high pressure

Basic Technical Specification

General	
Type	HCV 151.11.50.00-3.2
Operation	Continuously activated Solenoid/Hydraulic operation to Open Position. Spring return to closed position.
Port	3
Position	2
Option	Valve will close when current disappear or if Pilot Supply pressure falls below a specific level.
Mounting	Subplate
Weigth	3.8 kg (8.3 lb)
Materials	
Body	AiSi 316
Slide	TuNi
Seat	TuNi
Pilot Parts	Fully seawater corrosion resistant materials
Pressures	
Proof Pressure Supply/Pilot/Return	570 Bar / 570 Bar / 570 Bar (8.250 psi / 8.250 psi / 8.250 psi)
Supply Pressure	90 - 345 Bar (1.300 - 5.000 psi)
Pilot Pressure	90 - 345 Bar (1.300 - 5.000 psi)
Maximum Return Pressure	345 Bar (5.000 psi)
External Pressure	400 Bar (5.800 psi)
Capacity	
Cv, P - A	0,23
Cv, A - R	0,2
Steady State Leakage	Less than 0.2 ml/min
Electric Data	
Nom. Voltage	24 V
Nom. Power	12.5 W
Operations	
No. of operations @ 345/ 345 bar (5.000/ 5.000 psi) supply pressure	1000.000*
Operating Temperature	-10°C/ + 50°C (14°F / 122°F)
Fluid	
General	Water/glycol and mineral oil based subsea fluids

*The lubricity of different fluids varies, and will influence the No. of operations. Please contact Oceaneering Rotator

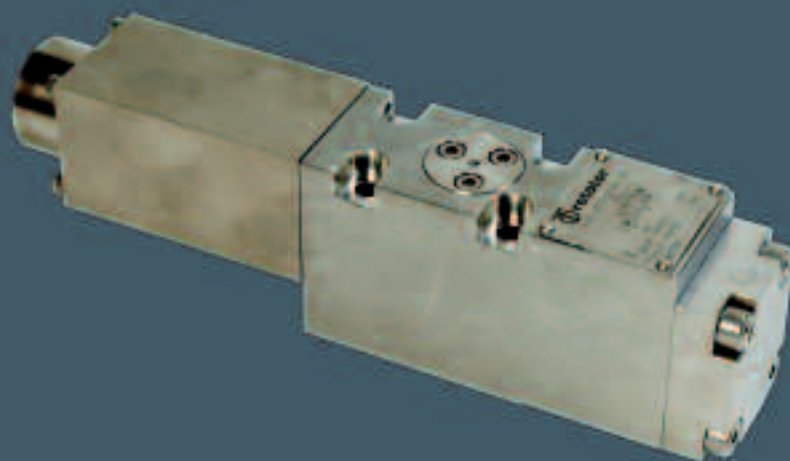


HYDRAULIC DIRECTIONAL CONTROL VALVE

DATASHEET

SERIES 15

HCV 151.11.51.00-3.2



Hydraulic Directional Control Valve

- High quality
- Highly comprehensive qualification test programmes
- Excellent performance
- Applicable in all subsea production control systems worldwide
- Reliability
- Endures extreme high pressure

Basic Technical Specification

General	
Type	HCV 151.11.51.00-3.2
Operation	Continuously activated Solenoid/Hydraulic operation to Open Position. Pressure assisted spring return to closed position.
Port	3
Position	2
Option	Valve will close when current disappear or if Pilot Supply pressure falls below a specific level.
Mounting	Subplate
Weigth	6.2 kg (13.7 lb)
Materials	
Body	AiSi 316
Slide	TuNi
Seat	TuNi
Pilot Parts	Fully seawater corrosion resistant materials
Pressures	
Proof Pressure Supply/Pilot/Return	1420 Bar / 570 Bar / 570 Bar (20.600 psi / 8.250 psi / 8.250 psi)
Supply Pressure	90 - 862 Bar (1.300 - 12.500 psi)
Pilot Pressure	90 - 345 Bar (1.300 - 5.000 psi)
Maximum Return Pressure	345 Bar (5.000 psi)
External Pressure	400 Bar (5.800 psi)
Capacity	
Cv, P - A	0.23
Cv, A - R	0.20
Steady State Leakage	Less than 0.2 ml/min
Clearliness requirements	SAE AS 4059D, class 12, class 8
Electric Data	
Nom. Voltage	24 V
Nom. Power	4 W
Operations	
No. of operations @ 862/345 bar (12.500/ 5.000 psi) supply pressure	25.000 *
Operating Temperature	-10°C/ + 50°C (14°F / 122°F)
Fluid	
General	Water/glycol and mineral oil based subsea fluids

*The lubricity of different fluids varies, and will influence the No. of operations. Please contact Oceaneering Rotator

